

FOR LEASE

(2ND FLOOR) 922 KING ST. WEST



PRIME KING WEST AREA
OPPORTUNITY

BOSLEY
COMMERCIAL

FOR LEASE
922 KING ST. WEST

THE BUILDING



Stunning and bright second floor corner commercial loft space with huge windows looking on to the CN Tower and Stanley Park. This single-use office space is comprised of 900 sq. ft. and configured with a private office, bright open space, a full kitchen and a private washroom. Featuring wood and beam construction, beautifully renovated with a private entrance.

Suitable for a variety of uses.

FEATURES

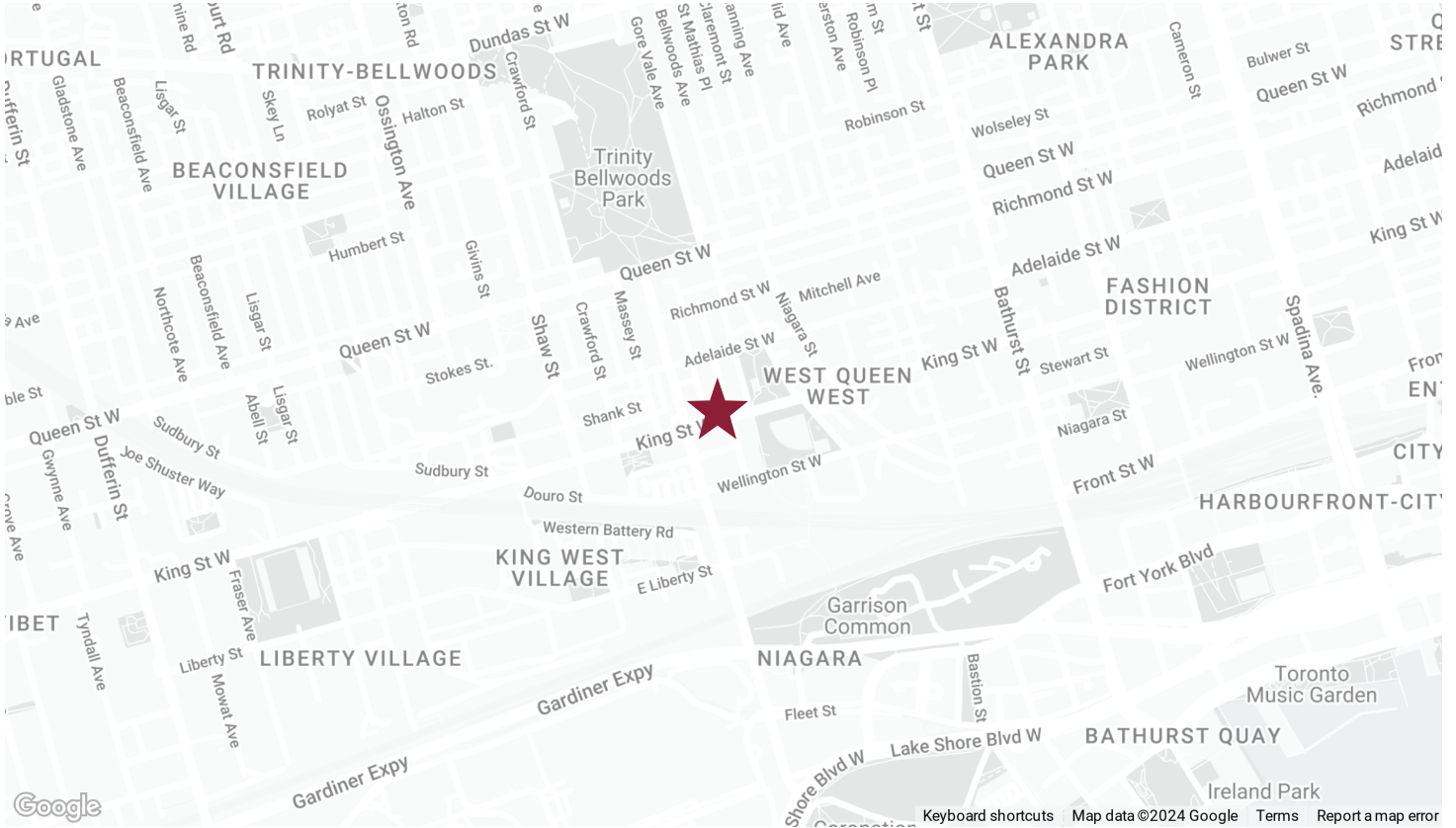
ADDRESS	922 King St. West
MONTHLY RENT:	\$2,400 Net Rent + \$739.28 TMI + HST + sep. metered Hydro
AREA:	900 SQ. FT
NEIGHBOURHOOD:	NIAGARA
CROSSROADS:	N/E CORNER KING W & STAFFORD
ZONING:	COM
PARKING:	Street parking



FOR LEASE

922 KING ST. WEST

LOCATION



WALK SCORE*

97

TRANSIT SCORE*

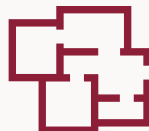
92

BIKE SCORE*

92



KING ST. W.:
N/E CORNER KING W & STAFFORD



900 SQ. FT.
SQ.FT.



SINGLE
OFFICE USE



KING ST. W.
LIFESTYLE



GREAT CAR
ACCESS



GREAT TRANSIT
ACCESS

FOR LEASE
922 KING ST. WEST

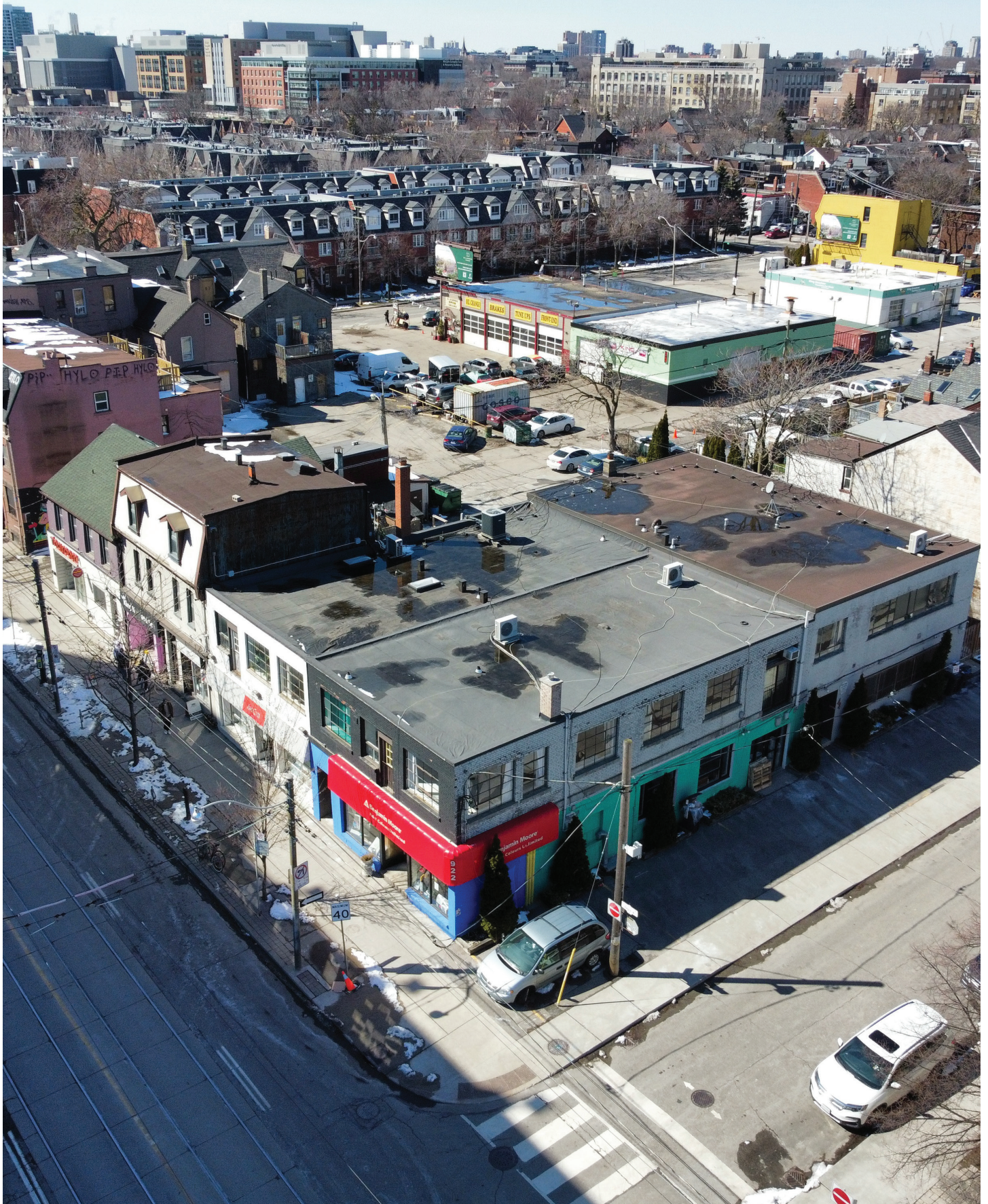


Municipal parking on roadside.



Short walk to King St. W. streetcar

FOR LEASE
922 KING ST. WEST



FOR LEASE
922 KING ST. WEST



CONTACT FOR MORE INFO



DON MULHOLLAND, CCIM

REALTOR®

VICE-PRESIDENT - COMMERCIAL DIVISION

C: 416-569-2785 | O: 416-530-1100

DMULHOLLAND@CCIM.NET

STEPHANIE WHITE WILLITTS, CCIM

REALTOR®

C: 647-297-0697 | O: 416-322-8000

SWW@CCIM.NET

BOSLEY

COMMERCIAL

BOSLEY REAL ESTATE LTD., BROKERAGE

1108 QUEEN ST. W, TORONTO

416-530-1100 | BOSLEYCOMMERCIALTEAM.COM

All information and statements contained herein, provided by Bosley Real Estate Ltd., Brokerage regarding property FOR LEASE, rental or financing is from sources deemed reliable and assumed correct, but no warranty or representation is made as to the accuracy thereof and same as submitted subject to errors, omissions, change of price, rental or other conditions, prior sale or withdrawal without notice.

* [HTTPS://WWW.WALKSCORE.COM/SCORE/1153-QUEEN-ST-W-TORONTO-ON-CANADA](https://www.walkscore.com/score/1153-queen-st-w-toronto-on-canada)

** COMMUNITY DEMOGRAPHICS (ACCORDING TO GEOWAREHOUSE)