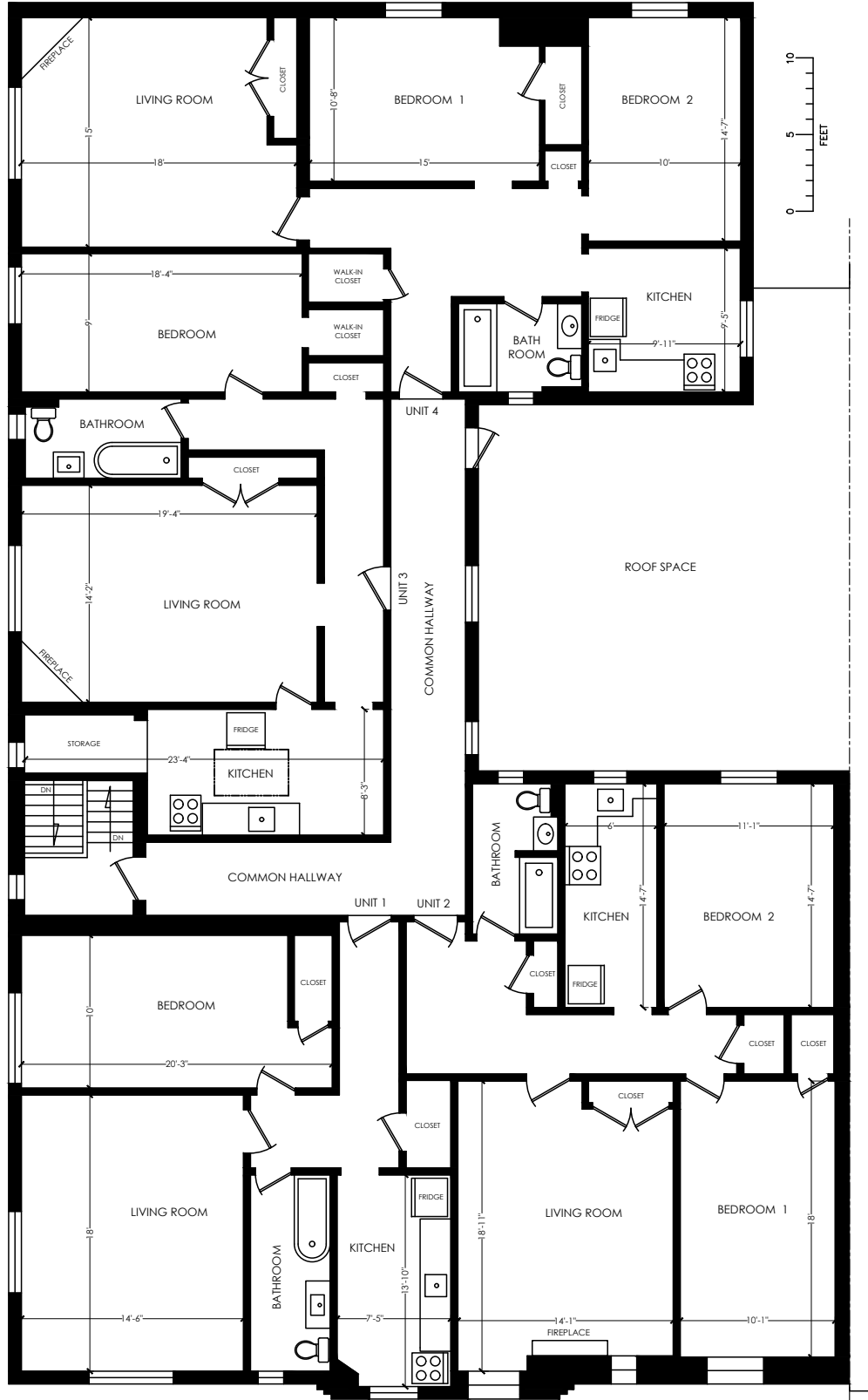


MAIN FLOOR
FLOOR AREA 4776 SQ. FT.
CEILING HEIGHT 9'-2"

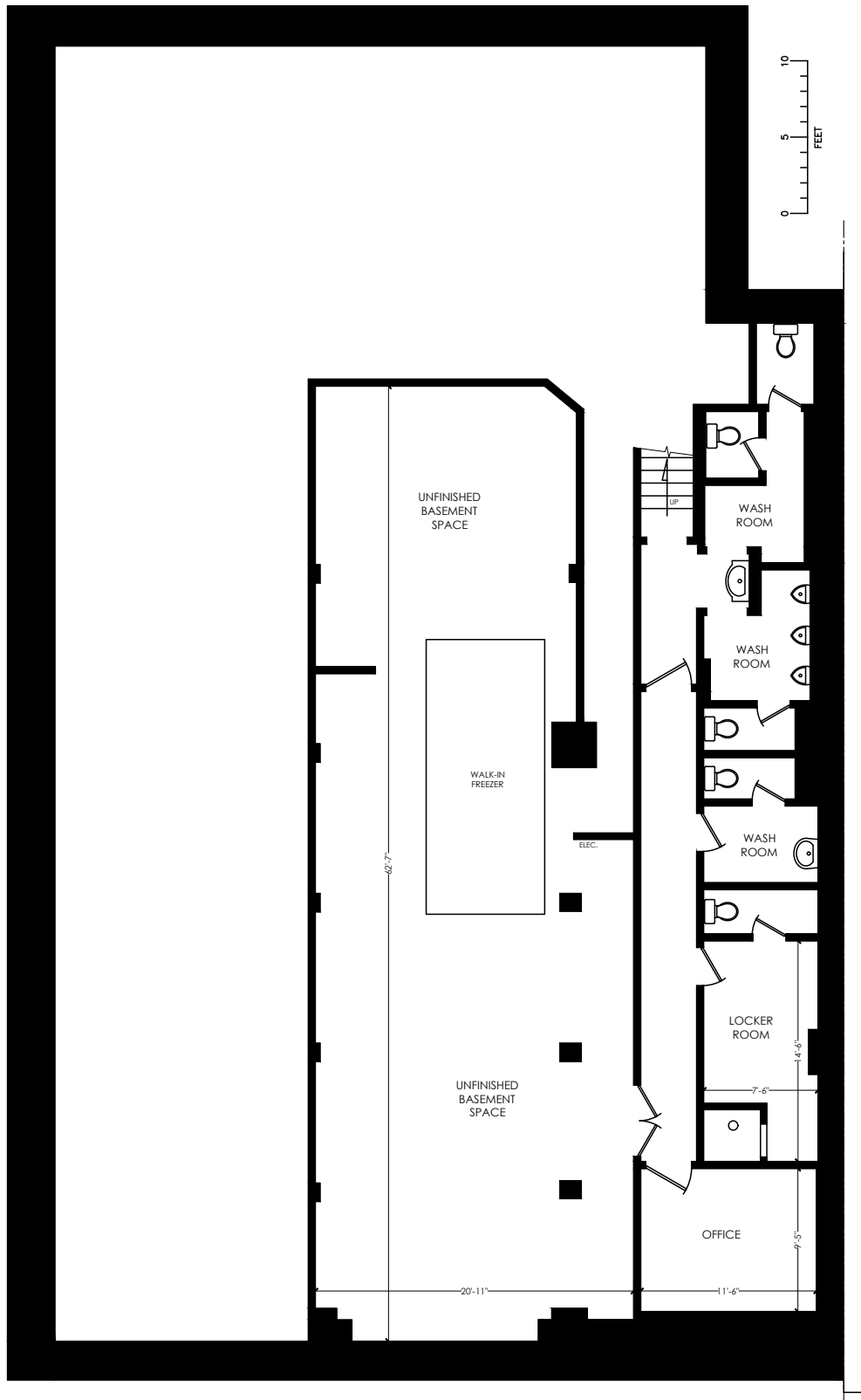




SECOND FLOOR

FLOOR AREA 4210 SQ. FT.
CEILING HEIGHT 8'-5"





BASEMENT
FLOOR AREA 4820 SQ. FT.
CEILING HEIGHT 6'-7"

