

FOR LEASE 18 GLOUCESTER LN, 3<sup>RD</sup> & 4<sup>TH</sup> FLOOR // Toronto // ON



## UNIQUE CREATIVE OFFICE SPACE

NEAR YONGE & BLOOR  
COMMERCIAL SPACE  
FOR LEASE

Nestled on a lane across from parkette.  
'Green P' at front door.  
Each floor is a separate unit with direct elevator access  
and can be leased separately or together.  
Post and beam construction with 10' ceilings.

1,747 sq. ft. per floor  
\$45.00 / per sq. ft., plus utilities  
Semi-gross

Lease one floor. // Lease them both.

**Don Mulholland, CCIM**  
SALES REPRESENTATIVE  
VICE PRESIDENT, COMMERCIAL DIVISION  
416-569-2785

**Michael Bradley**  
SALES REPRESENTATIVE  
647-338-0102  
mbradley.ca

Bosley Real Estate Ltd., Brokerage  
1108 Queen Street West  
Toronto, ON | M6J 3X6  
416 • 530 • 1100

**BOSLEY**  
REAL ESTATE

# FOR LEASE 18 GLOUCESTER LN, 3<sup>RD</sup> & 4<sup>TH</sup> FLOOR // Toronto // ON



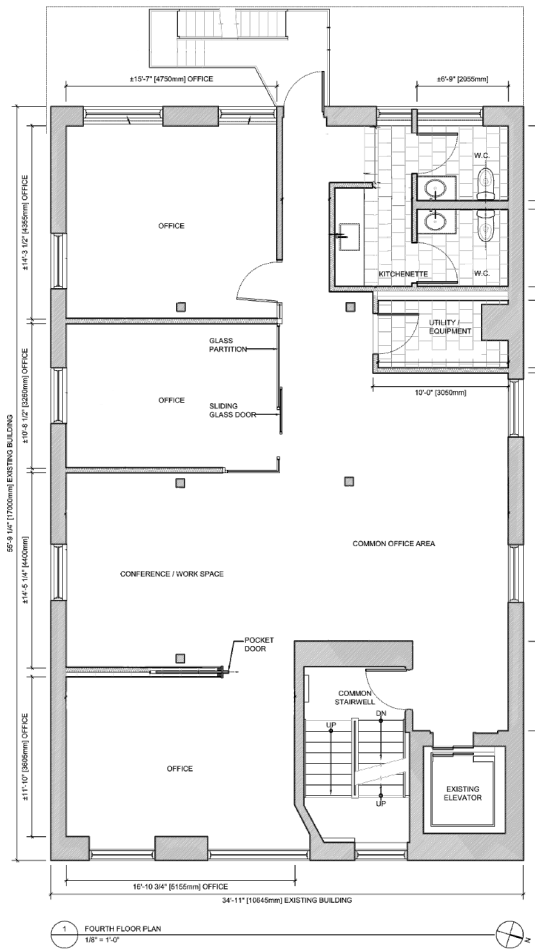
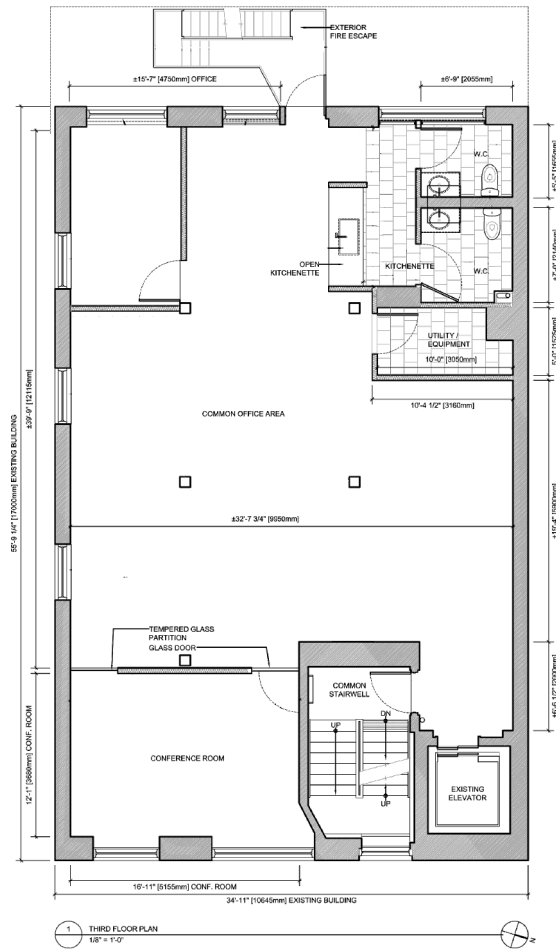
**Don Mulholland, CCIM**  
SALES REPRESENTATIVE  
VICE PRESIDENT, COMMERCIAL DIVISION  
416-569-2785

**Michael Bradley**  
SALES REPRESENTATIVE  
647-338-0102  
mbradley.ca

Bosley Real Estate Ltd., Brokerage  
1108 Queen Street West  
Toronto, ON | M6J 3X6  
416 • 530 • 1100

**BOSLEY**  
REAL ESTATE

# FOR LEASE 18 GLOUCESTER LN, 3<sup>RD</sup> & 4<sup>TH</sup> FLOOR // Toronto // ON



## Unit Features Completely updated in 2018

- New His and Her's washrooms
- Kitchenette with fridge
- Private boardroom/office and open space
- Storage/server room
- Direct, private elevator access
- Vinyl laminate flooring and porcelain tile in kitchen/washrooms
- New electrical and data wiring
- LED lighting
- Independent high-efficiency heating and cooling system,

**Don Mulholland, CCIM**  
SALES REPRESENTATIVE  
VICE PRESIDENT, COMMERCIAL DIVISION  
416-569-2785

**Michael Bradley**  
SALES REPRESENTATIVE  
647-338-0102  
mbradley.ca

Bosley Real Estate Ltd., Brokerage  
1108 Queen Street West  
Toronto, ON | M6J 3X6  
416 • 530 • 1100

**BOSLEY**  
REAL ESTATE

**FOR LEASE** 18 GLOUCESTER LN, 3<sup>RD</sup> & 4<sup>TH</sup> FLOOR // Toronto // ON



## UNIQUE CREATIVE / OFFICE SPACE

NEAR YONGE & BLOOR

One of the very few 'brick & beam' buildings in the area.  
Located just off of Yonge Street within walking distance to  
Bloor Street and the subway.

**Don Mulholland, CCIM**

SALES REPRESENTATIVE

VICE PRESIDENT, COMMERCIAL DIVISION

416-569-2785

**Michael Bradley**

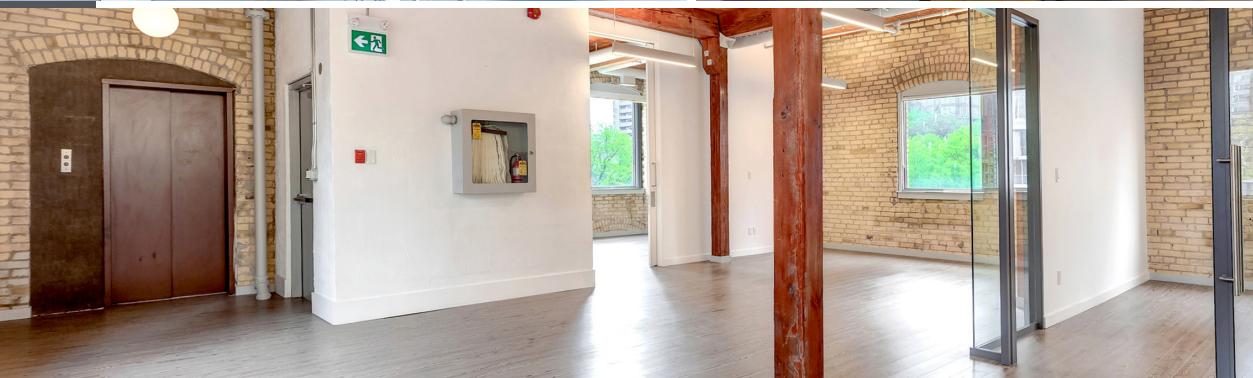
SALES REPRESENTATIVE

647-338-0102

mbradley.ca

Bosley Real Estate Ltd., Brokerage  
1108 Queen Street West  
Toronto, ON | M6J 3X6  
416 • 530 • 1100

**BOSLEY**  
REAL ESTATE



**Don Mulholland, CCIM**  
 SALES REPRESENTATIVE  
 VICE PRESIDENT, COMMERCIAL DIVISION  
 416-569-2785

**Michael Bradley**  
 SALES REPRESENTATIVE  
 647-338-0102  
 mbradley.ca

BOSLEY REAL ESTATE LTD., BROKERAGE RESPECTS THE CONTRACTS OF ITS COMPETITORS. ALL INFORMATION AND STATEMENTS CONTAINED HEREIN, PROVIDED BY BOSLEY REAL ESTATE LTD. REGARDING PROPERTY FOR SALE, RENTAL OR FINANCING IS FROM SOURCES DEEMED RELIABLE AND ASSUMED CORRECT, BUT NO WARRANTY OR REPRESENTATION IS MADE AS TO THE ACCURACY THEREOF AND SAME AS SUBMITTED SUBJECT TO ERRORS, OMISSIONS, CHANGE OF PRICE, RENTAL OR OTHER CONDITIONS, PRIOR SALE OR WITHDRAWAL WITHOUT NOTICE.

Bosley Real Estate Ltd., Brokerage  
 1108 Queen Street West  
 Toronto, ON | M6J 3X6  
 416 • 530 • 1100

**BOSLEY**  
 REAL ESTATE